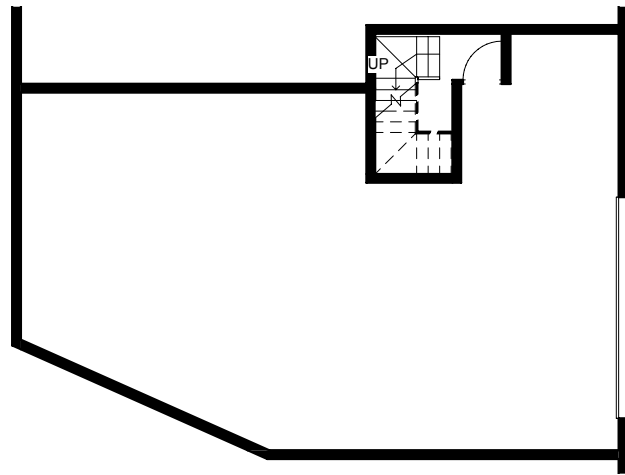


Unit 4 plan

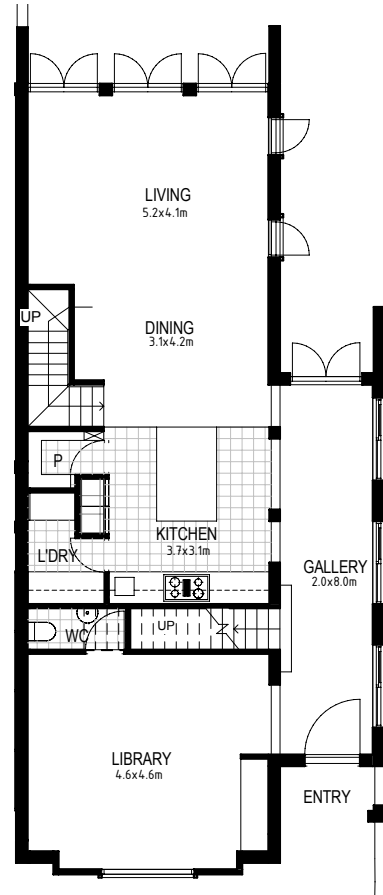


BASEMENT GARAGE PLAN

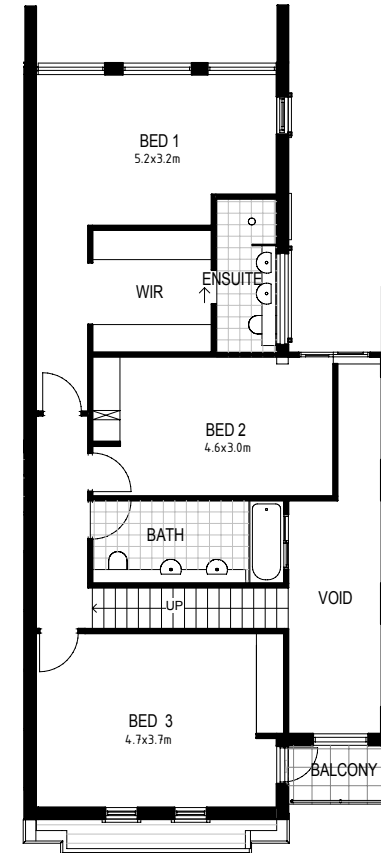


AREA ANALYSIS

| | |
|---------------|----------------------------|
| Ground floor: | 107.62m ² |
| Upper floor: | 92.31m ² |
| Total: | 199.93m ² |
| Balcony: | 3.62m ² |
| Courtyard: | 330m ² (approx) |



GROUND FLOOR PLAN



UPPER FLOOR PLAN

UNIT 4
1:100 at A3

